



Spring 2025

PEI COMMUNITY NAVIGATORS

Navigator News.

PEI Community Navigators Quarterly Newsletter

IN THIS ISSUE



Welcome from Maxine Rennie - Page 1



Updates from Western, Central, and Eastern PEI Navigators - Pages 2-4



English as an Additional Language (EAL) - Did You Know...- Page 5



MESSAGE FROM MAXINE RENNIE EXECUTIVE DIRECTOR

We welcome the sunshine and the awakening of our beautiful green island, just as we warmly embrace the hundreds of migrant workers who contribute to building and sustaining our economy in rural PEI each year. We are always thrilled when employers invite us to their farms and plants to meet the individuals who keep things running smoothly during the planting and harvest seasons. Whether you are observing the fisheries along the capes, the mussel boats dotting the bays, or the fields filled with seedlings, the workers who come to assist with our growing season are invaluable. We encourage new employers to take advantage of the free programs for recreation and learning offered through our PEI Community Navigator programs.

Additionally, fall will arrive quickly, and we advise new families who have come during the summer months to schedule an appointment with their local PEI Community Navigator. This will help ensure a smooth transition into the school season, with lots of joyful connections to be made over the summer months!

-Maxine Rennie



OUR MISSION

Individuals and families who choose to settle in rural PEI offer incredible value to the communities that they settle. In each of our numerous communities dotting the coastline or the inland rolling hills of our Island, you'll find a diverse group of community members who settled in PEI or were born as Islanders, coming together to help each other and create a prosperous and fulfilling life in Rural PEI. We are here to support the inclusion of our newest residents in all aspects of rural PEI life.

CONTACT US



Offices in Alberton, Central Bedeque, and Montague



www.PEICommunityNavigators.com

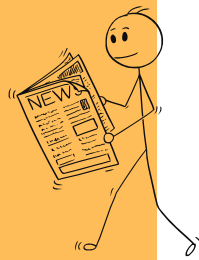


[@PEICommunityNavigators](https://www.instagram.com/PEICommunityNavigators)

FROM THE WESTERN PEI COMMUNITY NAVIGATORS

UPCOMING EVENTS

- Fishing Information Session - TBD
- Philippines Independence Day
- Mini DiverseCity West Point - July 20th 12:00pm-2:00pm
- National Indigenous Peoples Day



It's been a fun and busy start to spring in Western PEI!

We have been partnering with local schools in hosting multicultural days full of presentations, delicious food and amazing performances, with a couple more yet to come! A dedicated and successful group of EAL students attended language classes in Alberton over a 3 month period, wrapping up with an amazing class graduation and celebration.

We were also thrilled to be a part of a wonderful community potluck hosted at Moe's Independent. The evening was filled with great food, great company and great entertainment as we all enjoyed Family Feud on the big screen.

Follow us on Instagram and Facebook to keep in the know of the great events yet to come!!!

CONTACT US

📍 Offices in Alberton, Central Bedeque, and Montague

www.PEICommunityNavigators.com

@PEICommunityNavigators

FROM THE CENTRAL PEI COMMUNITY NAVIGATORS

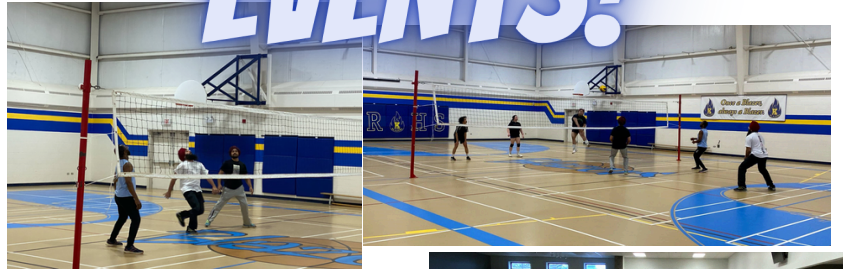
COMING SOON

- Volleyball Games in Kinkora - May 5, 12 & 26, 2025
- DICE (Diverse and Inclusive Pre-Cadet Experience) Information Session - May 26
- Philippine Heritage Month Celebration - June 21, 2025 Kensington
- English as a Second Language Classes - Every Wednesday in Kensington and Borden

TO FOLLOW OUR SOCIALS
Capture the Code!!!



EVENTS!



**LET'S
Celebrate!**

Stephanie

We are deeply grateful for your commitment to the Steering Committee. Your years of dedication and hard work have made a profound difference, and we are so thankful for your support.



**HAPPY
Mother's
Day!**

*"A MOTHER'S LOVE IS LIKE NO
OTHER LOVE ON EARTH"*




TRIVIA:

LAPU LAPU

was a Chieftain (Datu) of Mactan, Cebu who fought and defeated Spanish forces in 1521. He's one of the known heroes in the Philippines.

CONTACT US

 Offices in Alberton, Central Bedeque, and Montague

www.PEICommunityNavigators.com

 @PEICommunityNavigators

FROM THE EASTERN PEI COMMUNITY NAVIGATORS

**Coming
Soon!**

- May 13th - Multicultural Talent Show, Souris, PE
- May 13th - Steering Committee Meeting, Souris, PE
- May 16th - Multicultural Day at Belfast Consolidated School, Belfast, PE
- June 28th - Belfast Days, Pinette Raceway, PE
- Ongoing- English Classes



Spring in Eastern PEI has been lively and filled with joy. We kicked off March by celebrating the incredible women in our community on International Women's Day. We also enjoyed community meals and hosted our first-ever Eastern PEI PINOY Basketball tournament. As we look forward to the summer, be sure to check our Facebook page for the latest updates on sessions and events happening in Eastern PEI! We have something for everyone, help us spread the word about our services to new families and individuals, migrant seasonal workers, and new Permanent Residents!



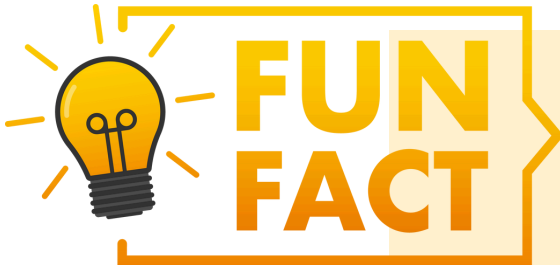
CONTACT US

📍 Offices in Alberton, Central Bedeque, and Montague

www.PEICommunityNavigators.com

@ @PEICommunityNavigators

Did you know that PEI Community Navigators offer conversations circles and language classes ??? If you or someone you know is needing help with your English Language Skills, reach out to your PEI Community Navigator today! All conversation circles are offered free of charge and are a great opportunity to practice in a relaxed and comfortable environment.




**THE MOST USED
ADJECTIVE IN THE
ENGLISH LANGUAGE IS**



CONTACT US

 Offices in Alberton, Central Bedeque, and Montague

www.PEICommunityNavigators.com

 @PEICommunityNavigators